

# BIRCH WIRE MESH PLYWOOD

Our Anti-Slip Birch Plywood is specially crafted for exterior applications where safety is paramount. Featuring a textured surface that provides grip, this plywood is ideal for flooring in high-traffic areas, scaffolding, or transport trailers. Its anti-slip coating ensures secure footing in wet or slippery conditions, while its robust birch core offers excellent durability.

## WIRE MESH BIRCH PLYWOOD IS SUITABLE FOR:

- ✓ Platforms
- ✓ Stage systems
- ✓ Vehicle and trailer floors

### Product name

Wire Mesh Birch Plywood

### Application

Suitable for platforms, stage systems, vehicle and trailer floors.

### Sizes

1250 x 2500 mm; 1220 x 2440 mm

### Veneer thickness

1,5 mm

### Glue contents

Phenol Formaldehyde (WBP), E1

### Surface

Dark brown phenolic film  
Edges sealed with water resistant paint  
Film density 120 g/m<sup>2</sup>; 220 g/m<sup>2</sup>

### Moisture content

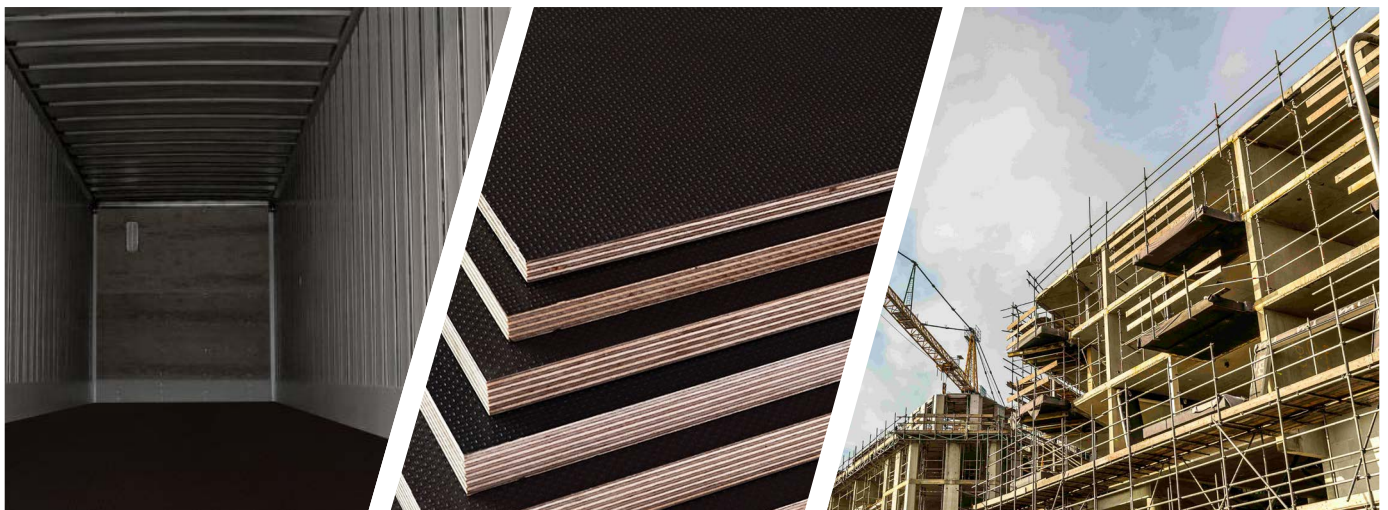
10% +/- 2%

### Production standard

EN 636-3S

### Certification

FSC Mix Credit  
PEFC  
CE  
UKCA  
CARB Phase 2/TSCA  
EN 717-1



**THICKNESS TOLERANCE FOR SANDED MATERIAL** (Special thickness tolerances available upon request)

Nominal Thickness	6,5	9	12	15	18	21	24	27	30	35
Number of plies	5	7	9	11	13	15	17	19	21	25
Minimum	6,1	8,8	11,5	14,3	17,1	20,0	22,9	25,2	28,1	33,5
Maximum	6,9	9,5	12,5	15,3	18,7	21,5	24,5	26,8	30,5	35,5

**PLYWOOD PACKAGING**

Thickness	6,5	9	12	15	18	21	24	27	30	35
Number of sheets per pack	110	80	60	50	40	35	30	27	25	21
m <sup>3</sup> per pack 1250x2500	2,234	2,25	2,25	2,344	2,25	2,297	2,25	2,278	2,344	2,296
m <sup>3</sup> per pack 1220x2440	2,128	2,143	2,143	2,233	2,143	2,188	2,143	2,170	2,232	2,187
m <sup>2</sup> per pack 1250x2500	343,75	250	187,5	156,25	125	109	93,75	84,38	78,13	65,62
m <sup>2</sup> per pack 1220x2440	327,47	238,16	178,62	148,85	119,08	104,20	89,31	80,38	74,43	62,52

**FILM FACED BIRCH PLYWOOD QUALITY GRADES**

CHARACTERISTICS	GRADES	
	F1/W1	F2/W2
Lack of laminate film on the surface	Allowed no more than 5 mm, if it is covered with moisture-protective paint	Allows unpainted 20cm x125cm
Wood structure, sound knots, inserts	Permitted	Permitted
Film stains and streaks on the surface	No more than 15% of the sheet area stains are allowed without loss of integrity of the surface coating	Permitted
Matte spots and stripes	Up to 50% of the surface	Permitted
Streaks and stains from pressing plates	Permitted	Permitted
Temperature stains on the surface	Not permitted	Allowed without damaging the coating
Film coatings (thickenings, wrinkles)	No restrictions with a width of 20 mm	Permitted
Film fragments glued to the surface	Allows 1cm width x 5cm length, 3 per sheet	Permitted
Burnt film (burnout) due to veneer defects: cracks, damage	10 mm wide, 1 pc/meter width. Ø 30 mm, 1 pc/meter wide or unlimited if Ø 10 mm	Permitted
Veneer defect due to rough peeling	Allows 25cm x 25cm	Permitted
Dents	5mm width x 3cm length/3 per sheet	Permitted
Scratches	If there is no scratched laminate	Permitted
Trimming defects	Not permitted	Permitted
Soft edges. Lack of veneer at the edges	Allowed in one layer of veneer with a depth of 3mm., the edges should be firm	Tolerates if the edges of the plywood are rigid
Delamination	Not permitted	7cm x 7cm / 2 per sheet

## BIRCH PLYWOOD DIMENSIONS AND TOLERANCES

Nominal thickness, mm	Number of plies	EN 315 thickness tolerance, mm		Plywood thickness tolerance, mm	
		min	max	min	max
6.5	5	5.9	6.9	6.1	6.9
9	7	8.3	9.5	8.8	9.5
12	9	11.2	12.6	11.5	12.5
15	11	14.2	15.7	14.3	15.3
18	13	17.1	18.7	17.1	18.7
21	15	20.0	21.8	20.0	21.5
24	17	22.9	24.9	22.9	24.5
27	19	25.2	28.4	25.2	26.8
30	21	28.1	31.5	28.1	30.5
35	25	33.5	36.1	33.5	35.5
40	29	38.4	41.2	38.8	41.2

### Panel sizes

Standard sizes, mm x mm

1220 x 2440

1250 x 2500

### Panel tolerances

Length/Width, mm

< 1000

± 1

1000 ... 2000

± 2

> 2000

± 3

EN 315 Squareness of panel

1 mm/m

EN 315 Straightness of panel

1 mm/m