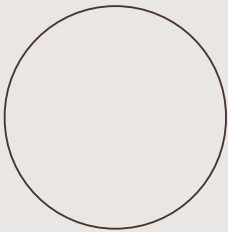


# SOLID FLOORS



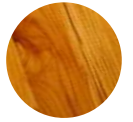
*Real* **FLOOR**®



# CONTENT

PAGE 3  
TEAK

---



PAGE 5  
MERBAU

---



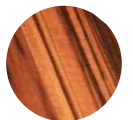
PAGE 7  
IPÉ

---



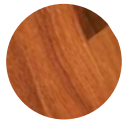
PAGE 9  
MUIRACATAIRA

---



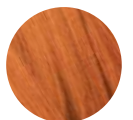
PAGE 11  
CUMARU

---



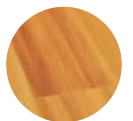
PAGE 13  
JATоба

---



PAGE 15  
GARAPA

---



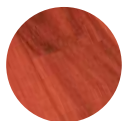
PAGE 27  
SUCUPIRA

---



PAGE 29  
MASSARANDUBA

---



PAGE 21-28  
OAK

*(INDUSTRIAL PARQUET, MOSAIC PARQUET, HERRINGBONE, PARQUET, LAMPARQUET)*



---

# TEAK

## TECTONA GRANDIS

### TRADE NAMES:

*TECA, TECK, TEAK GENUINE, JAVA TEAK, KYUN, JATI, DELEG Y KULIDAWA, SAK Y MAI-SAK, GIA THI, TADI, SAGWAN, KEMBAL, SEMARANG, DJATI, MAY-SAK*

### LOCATION OF OCCURRENCE

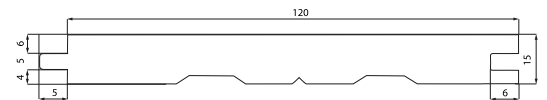
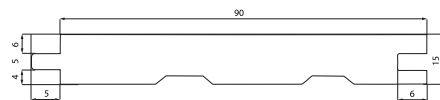
Teak originates from Indonesia and also grows in India, Thailand, Laos, and Java. It has also partially spread to Malaysia, Borneo, the Philippines, tropical Africa, and Central America.

### GENERAL DESCRIPTION OF THE WOOD

Teak has narrow, light yellow-brown sapwood and dark golden-brown heartwood, which darkens to medium or dark brown on the surface when exposed to air. Teak primarily has straight grain, a more vibrant texture, a wider range of colors, and a more diverse structure. It is a highly decorative and luxurious wood, ideal for flooring.



Teak is a luxurious wood for flooring. It has narrow, light yellow-brown sapwood and dark golden-brown heartwood.



WIDTH 90



WIDTH 120

### AVAILABLE DIMENSIONS

- **Thickness:** 15 mm
- **Width:** 90 mm / 120 mm
- **Length:** 400 - 1500 mm (increasing by 10 cm), average length 900 mm
- Teak flooring is supplied with a minimum of 20% lengths between 400 - 600 mm evenly distributed and 80% lengths between 650 - 1500 mm.

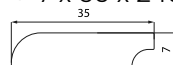
### QUALITY AND PROCESSING

Surface brushed, unfinished  
 → 4x tongue&groove without bevels on longitudinal and transverse sides

### SKIRTINGS

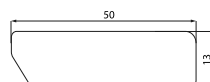
#### SOLID TEAK

- 7 x 35 x 2400 m, without SF



#### NATURAL TEAK VENEER

- 13 x 50 x 2400 mm, oiled



### RECOMMENDED ADHESIVE FOR FULL SURFACE BONDING:

- Two-component polyurethane adhesive Bakit PU-P



### RECOMMENDED SURFACE FINISH:

- Osmo Clear Hardwax Oil Express with hardener



---

# MERBAU

INTSIA SPP.

**TRADE NAMES:**

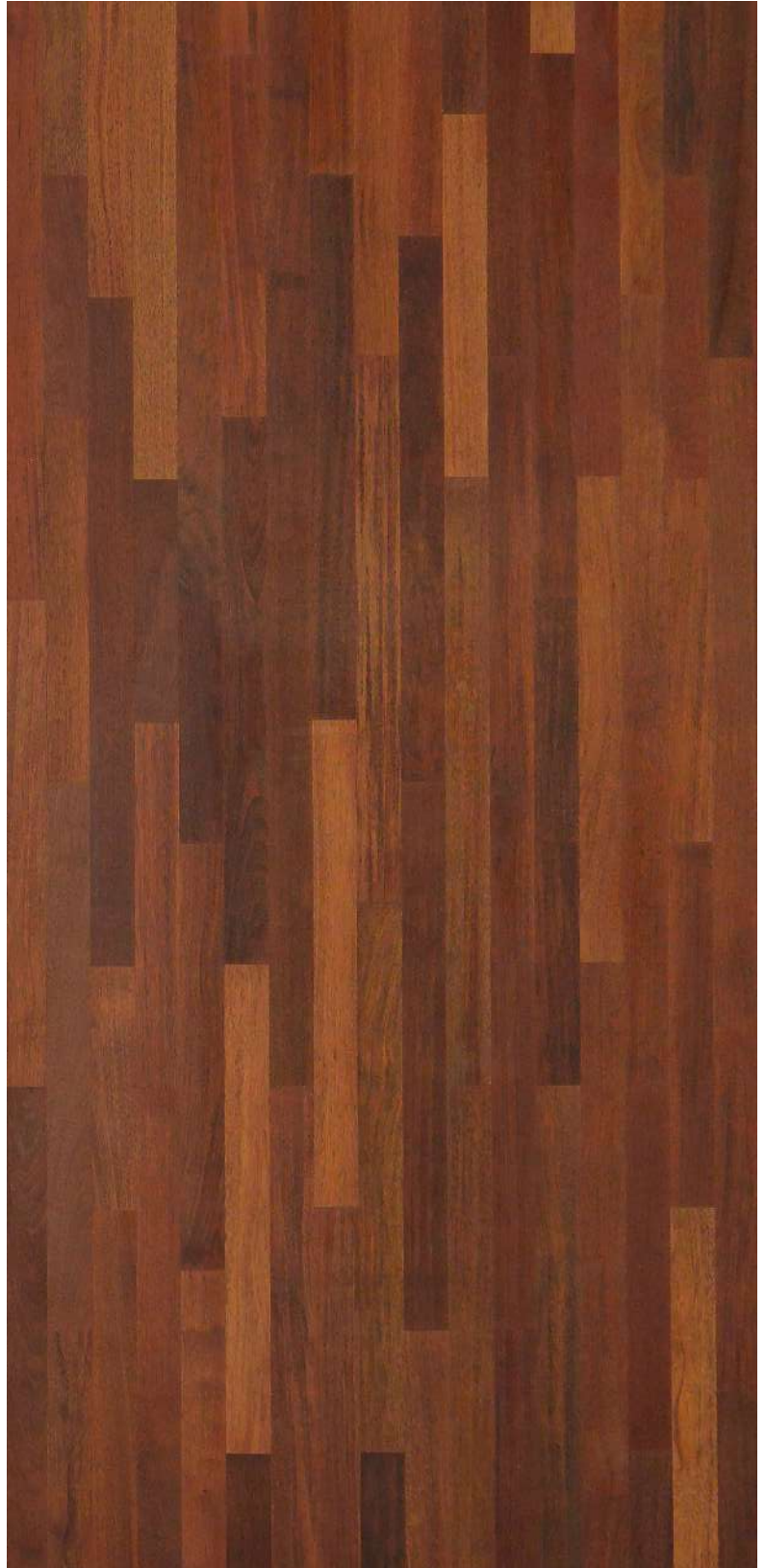
*IPIL, IPIL LAUT, MIRABOW, LUM-PAW, GONUO, KALABAU, KWILA, KOMU, HINTSY, MAKAMONG, GONUOC*

**LOCATION OF OCCURRENCE**

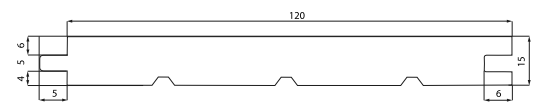
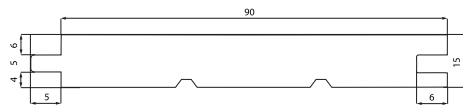
Scattered in both evergreen and dry tropical forests. Commonly found in lowland coastal forests (mangroves and river valleys) in the Indo-Malayan region of Southeast Asia, including Myanmar, Vietnam, Thailand, Cambodia, Malaysia, Indonesia, the Philippines, the islands of the western Pacific—particularly New Guinea, and Australia..

**GENERAL DESCRIPTION OF THE WOOD**

The orange-brown color of the heartwood gradually darkens from brownish-gray to a darker reddish-brown (zoned). The sapwood, with its light yellow color, is distinctly different from the heartwood. The wood has a coarser texture, usually with straight grain, though sometimes lightly striped due to the spiral grain in radial cuts. It is a very decorative wood with a slight natural sheen.



The orange-brown color of the heartwood gradually darkens from brownish-gray to a deeper reddish-brown.



WIDTH 90



WIDTH 120

## AVAILABLE DIMENSIONS

- **Thickness:** 15 mm
- **Width:** 90 mm / 120 mm
- **Length:** 400 - 1500 mm (increasing by 10 cm), average length 900 mm

- Merbau flooring is supplied with a minimum of 20% lengths between 400 - 600 mm evenly distributed and 80% lengths between 650 - 1500 mm.

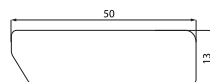
## QUALITY AND PROCESSING

- Surface brushed, unfinished
- 4x tongue&groove, without bevels on the longitudinal and transverse sides

## SKIRTINGS

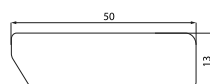
### NATUR MERBAU VENEER

- 13 x 50 x 2400 mm, oiled



### SOLID SPRUCE SKIRTING

- Lacquered white RAL 9010
- 13 x 50 x 2400 mm, oiled



## RECOMMENDED ADHESIVE FOR FULL SURFACE BONDING:

- Two-component polyurethane adhesive Bakit PU-P



## RECOMMENDED SURFACE FINISH:

- Osmo Clear Hardwax Oil Express with hardener



---

# IPE

HANDROANTHUS SPP.

## TRADE NAMES:

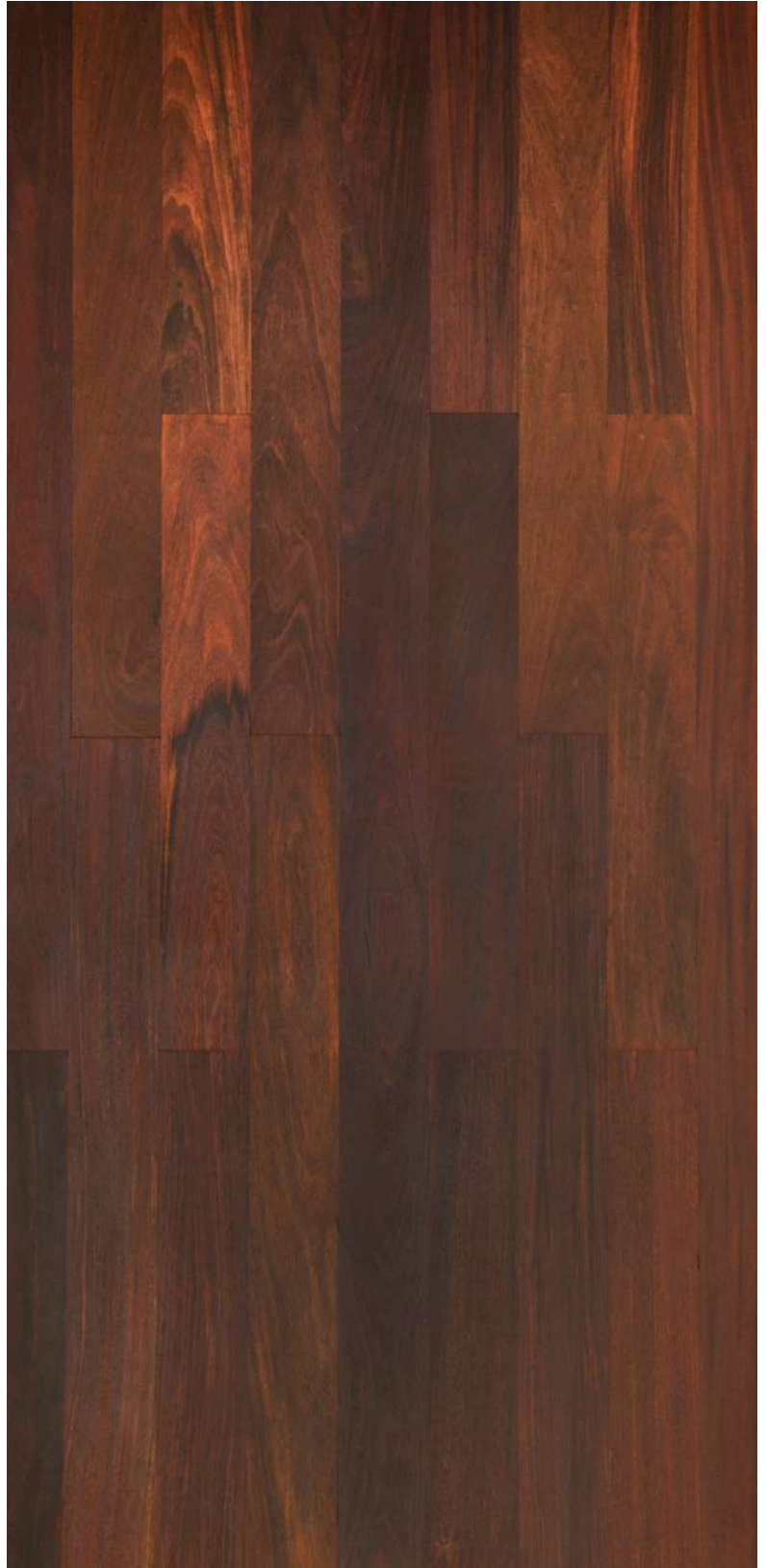
*LAPACHO, GUAYACAN, EBÉNE VERTE, PAO ĀARCO, GROENHEART, WEHETE, WASSIBA, IPÊ TABACO, COGWOOD, BRAZILIAN WALNUT, PARATODO, PUY, LAPACHO NEGRO, EBANO VERDE, TAHUARI NEGRO, IRON WOOD, HAKIA, TAHUARI, TAJIBO, POLVILLO, ARAGUANÉY POI, PIÚVA, IPÊ ROXO, IPÊ UNA, IPÊ ROJO, RED IPE (AND MANY OTHERS)*

## LOCATION OF OCCURRENCE

Due to its growth in highly varied conditions, it is described as ecologically diverse, ranging from grasslands to rainforests. It thrives in tropical forests with sandy and moist soils. It is found in the southern regions of North America and the northern regions of South America (southern Mexico, Caribbean islands, Brazil, Guyana, Colombia, Venezuela, northern Argentina).

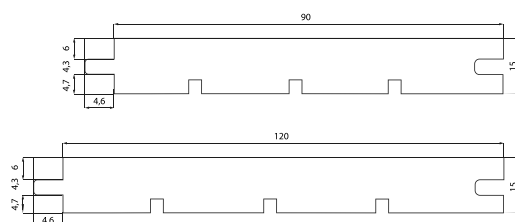
## GENERAL DESCRIPTION OF THE WOOD

Solid Ipe wood floors are incredibly durable. There are few types of flooring with wood that is stronger and denser than Ipe. The grayish to reddish sapwood sharply transitions into light olive-greenish brown heartwood, which darkens in zones to green-brown or brown.





The grayish to reddish sapwood sharply transitions into light olive-greenish brown heartwood, which darkens to zones of green-brown to brown.



### AVAILABLE DIMENSIONS

- **Thickness:** 15 mm
- **Width:** 90 mm / 120 mm
- **Length:** 400 - 1500 mm (increasing by 10 cm), average length 900 mm
- Ipe flooring is supplied with a minimum of 20% lengths between 400 - 600 mm evenly distributed and 80% lengths between 650 - 1500 mm.

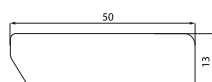
### QUALITY AND PROCESSING

- Surface brushed, unfinished
- 4x tongue&groove, without bevels on the longitudinal and transverse sides

### SKIRTINGS

#### SOLID SPRUCE SKIRTING

- Lacquered white RAL 9010
- 13 x 50 x 2400 mm



### RECOMMENDED ADHESIVE FOR FULL SURFACE BONDING:

- Two-component polyurethane adhesive Bakit PU-P



### RECOMMENDED SURFACE FINISH:

- Osmo Clear Hardwax Oil Express with hardener



---

# MUIRACATIARA

ASTRONIUM BALANSAE/FRAXINIFOLIUM/  
GRAVEOLENS/LECOINTEI

## TRADE NAMES:

*MUIRACATIARA* , *GONÇALO ALVES*, *KINGWOOD*,  
*TIGERWOOD*

## LOCATION OF OCCURRENCE

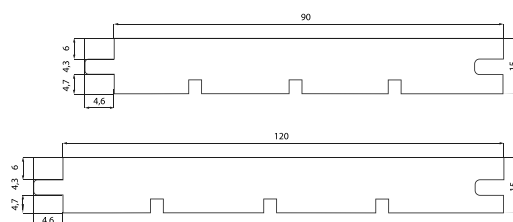
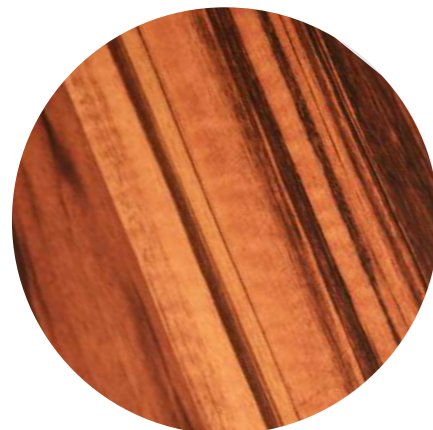
The hard and durable Muiracatiara wood grows in tropical regions of Central and South America. It is found in both dry and wet forests, in lowlands as well as at high altitudes.

## GENERAL DESCRIPTION OF THE WOOD

Golden-red with black streaks, this wood is commonly referred to as Tigerwood. The heartwood is light orange-brown with varying amounts of dark brown streaks, making Muiracatiara particularly decorative.



Exceptionally decorative, light orange-brown wood with varying amounts of dark brown streaks.



## AVAILABLE DIMENSIONS

- **Thickness:** 15 mm
- **Width:** 90 mm / 120 mm
- **Length:** 400 - 1500 mm (increasing by 10 cm), average length 900 mm
- Muiracatiara flooring is supplied with a minimum of 20% lengths between 400 - 600 mm evenly distributed and 80% lengths between 650 - 1500 mm.

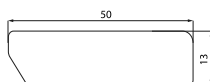
## QUALITY AND PROCESSING

- Surface brushed, unfinished
- 4x tongue&groove, without bevels on the longitudinal and transverse sides

## SKIRTINGS

### SOLID SPRUCE SKIRTING

- Lacquered white RAL 9010
- 13 x 50 x 2400 mm



## RECOMMENDED ADHESIVE FOR FULL SURFACE BONDING:

- Two-component polyurethane adhesive Bakit PU-P



## RECOMMENDED SURFACE FINISH:

- Osmo Clear Hardwax Oil Express with hardener



---

# CUMARU

DIPTERYX ODORATA

**TRADE NAMES::**

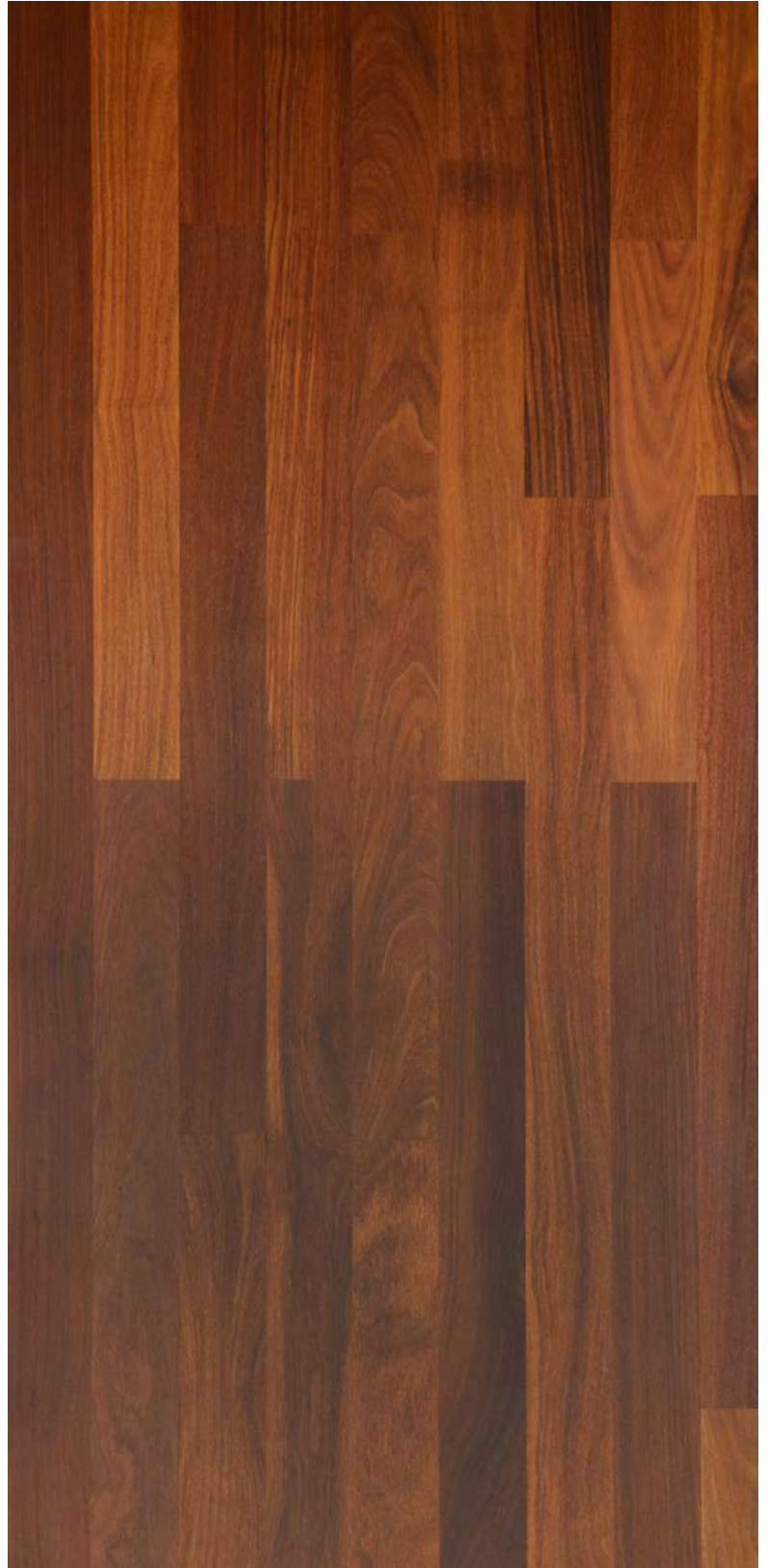
*CUMARU, BRAZILIAN TEAK, SOUTHERN CHESTNUT, ALMENDRILLO, KUMARU, TONKA, TONKA BEAN*

**LOCATION OF OCCURRENCE**

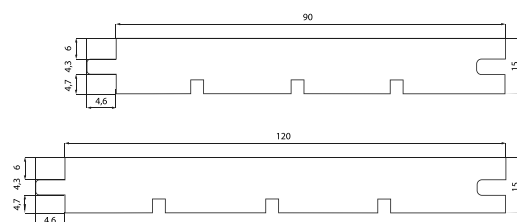
Cumaru, also known as Brazilian teak, is wood originating from Central and South American countries, particularly Brazil and Peru.

**GENERAL DESCRIPTION OF THE WOOD**

Cumaru offers a wide range of pleasant, warm hues, from honey-brown and yellow-brown to reddish-brown, which complement each other perfectly. The fibers of cumaru are often interwoven and wavy, creating a very interesting texture. The tones of this wood are very warm, providing a relaxing feeling that makes it wonderful to come home to.



Cumaru offers a wide range of pleasant, warm hues from honey-brown and yellow-brown to reddish-brown.



### AVAILABLE DIMENSIONS

- **Thickness:** 15 mm
- **Width:** 90 mm / 120 mm
- **Length:** 400 - 1500 mm (increasing by 10 cm), average length 900 mm
- Cumaru flooring is supplied with a minimum of 20% lengths between 400 - 600 mm evenly distributed and 80% lengths between 650 - 1500 mm.

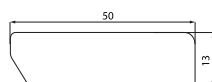
### QUALITY AND PROCESSING

- Surface brushed, unfinished
- 4x tongue&groove, without bevels on the longitudinal and transverse sides

### SKIRTINGS

#### SOLID SPRUCE SKIRTING

- Lacquered white RAL 9010
- 13 x 50 x 2400 mm



### RECOMMENDED ADHESIVE FOR FULL SURFACE BONDING:

- Two-component polyurethane adhesive Bakit PU-P



### RECOMMENDED SURFACE FINISH:

- Osmo Clear Hardwax Oil Express with hardener



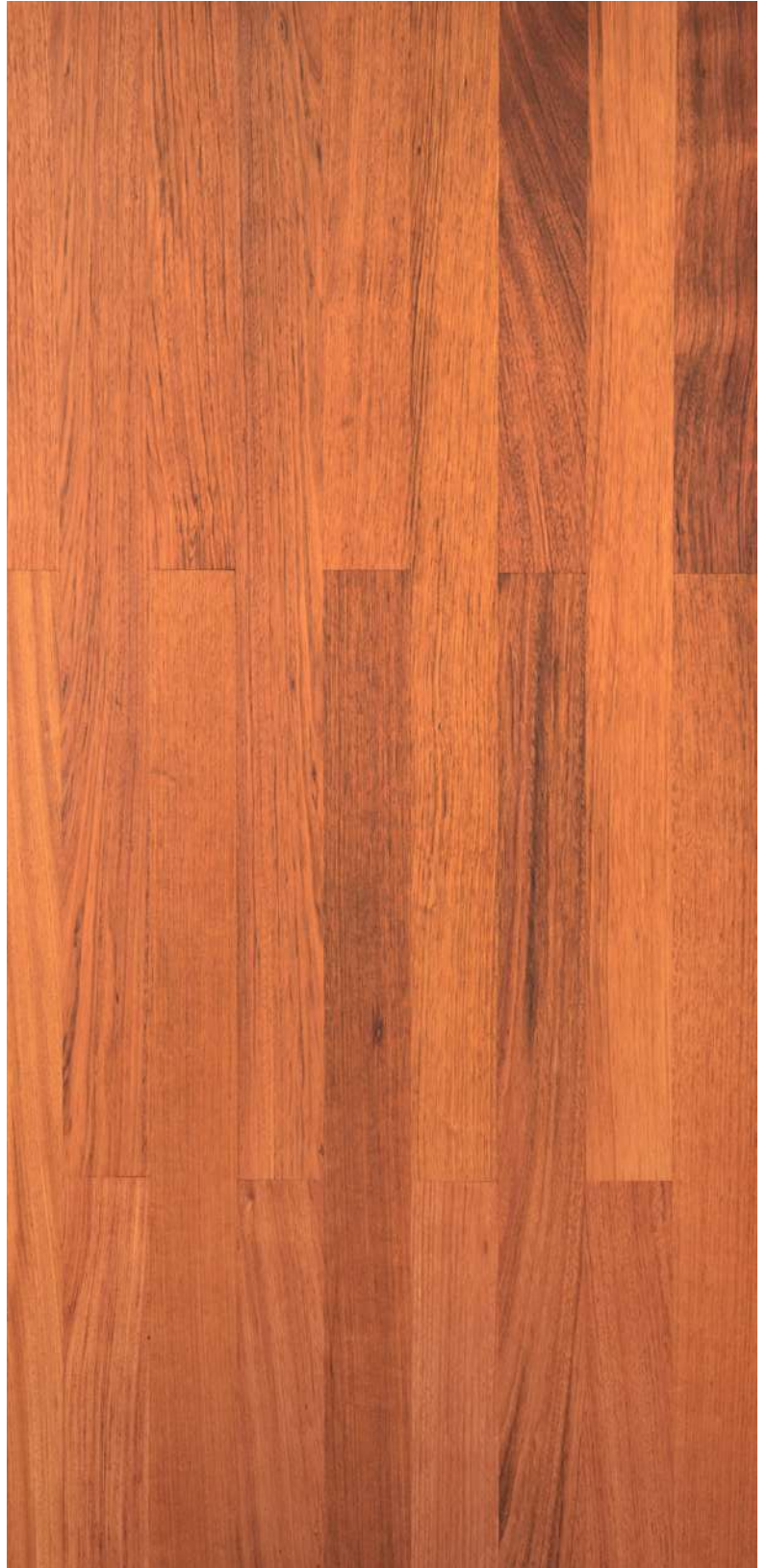
---

# JATOBA

HYMENAEA SPP.

**TRADE NAMES:**

*BRAZILIAN CHERRY, HYMENAEA COURBARIL FROM THE TROPICAL FORESTS OF SOUTH AMERICA, ESPECIALLY FROM THE REGIONS OF BRAZIL*



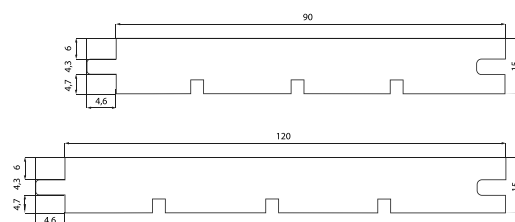
**LOCATION OF OCCURRENCE**

Forests in South America, particularly in Brazil, Venezuela, Colombia, and Peru.

**GENERAL DESCRIPTION OF THE WOOD**

The heartwood has a pinkish-red to orange-red color, which darkens to a deep reddish-brown. The heartwood features a nice luster. The grain is straight, sometimes interlaced. The wood texture is fine to medium-fine.

The heartwood has a pinkish-red to orange-red color, which darkens to a deep reddish-brown.



### AVAILABLE DIMENSIONS

- **Thickness:** 15 mm
- **Width:** 90 mm / 120 mm
- **Length:** 400 - 1500 mm (increasing by 10 cm), average length 900 mm
- Jatoba flooring is supplied with a minimum of 20% lengths between 400 - 600 mm evenly distributed and 80% lengths between 650 - 1500 mm.

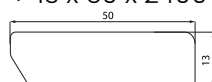
### QUALITY AND PROCESSING

- Surface brushed, unfinished
- 4x tongue&groove, without bevels on the longitudinal and transverse sides

### SKIRTINGS

#### SOLID SPRUCE SKIRTING

- Lacquered white RAL 9010
- 13 x 50 x 2400 mm



### RECOMMENDED ADHESIVE FOR FULL SURFACE BONDING:

- Two-component polyurethane adhesive Bakit PU-P



### RECOMMENDED SURFACE FINISH:

- Osmo Clear Hardwax Oil Express with hardener



---

# GARAPA

## APULEIA LEIOCARPA

### TRADE NAMES:

*GRAPIA, GARAPEIRA, AMARELINHO, BARAJUBA, GEMA DE OVO, JATAÍ-AMARELO, MUORAJUBA, MUIRATUÁ, GARAPA-BRANCA, GARAPA-AMARELA, BARAPIBO, CUMARURAMA, MARATUÁ, YVYRA, AMASCAPI*

### **LOCATION OF OCCURRENCE**

Canopy of semi-deciduous hardwood forests from the Pará River to Rio Grande and from southern Bahia to Espírito Santo in the Atlantic rainforest. Found throughout the Amazon, Argentina, Brazil, Uruguay, Paraguay, Bolivia, Ecuador, Colombia, Venezuela, and Peru.

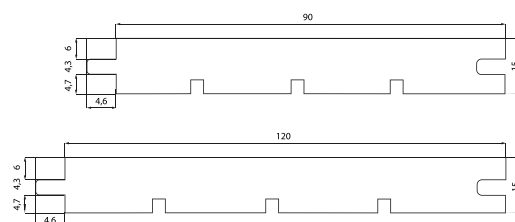
### **GENERAL DESCRIPTION OF THE WOOD**

The heartwood ranges from yellow, yellowish-beige to light brown, gradually darkening to brown. The sapwood is yellowish-white. Under different angles of light, the wood appears to transition from light to dark shades. It has a uniform structure with a smooth surface and a light natural sheen.





The heartwood ranges from yellow, yellowish-beige to light brown, gradually darkening to brown.



## AVAILABLE DIMENSIONS

- **Thickness:** 15 mm
- **Width:** 90 mm / 120 mm
- **Length:** 400 - 1500 mm (increasing by 10 cm), average length 900 mm
- Garapa flooring is supplied with a minimum of 20% lengths between 400 - 600 mm evenly represented and 80% lengths between 650 - 1500 mm.

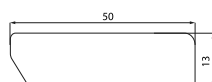
## QUALITY AND PROCESSING

- Surface brushed, unfinished
- 4x tongue&groove, without bevels on the longitudinal and transverse sides

## SKIRTINGS

### SOLID SPRUCE SKIRTING

- Lacquered white RAL 9010
- 13 x 50 x 2400 mm



## RECOMMENDED ADHESIVE FOR FULL SURFACE BONDING:

- Two-component polyurethane adhesive Bakit PU-P



## RECOMMENDED SURFACE FINISH:

- Osmo Clear Hardwax Oil Express with hardener



---

# SUCUPIRA

BOWDICHIA NITIDA, BOWDICHIA VIRGILIOIDES

## TRADE NAMES:

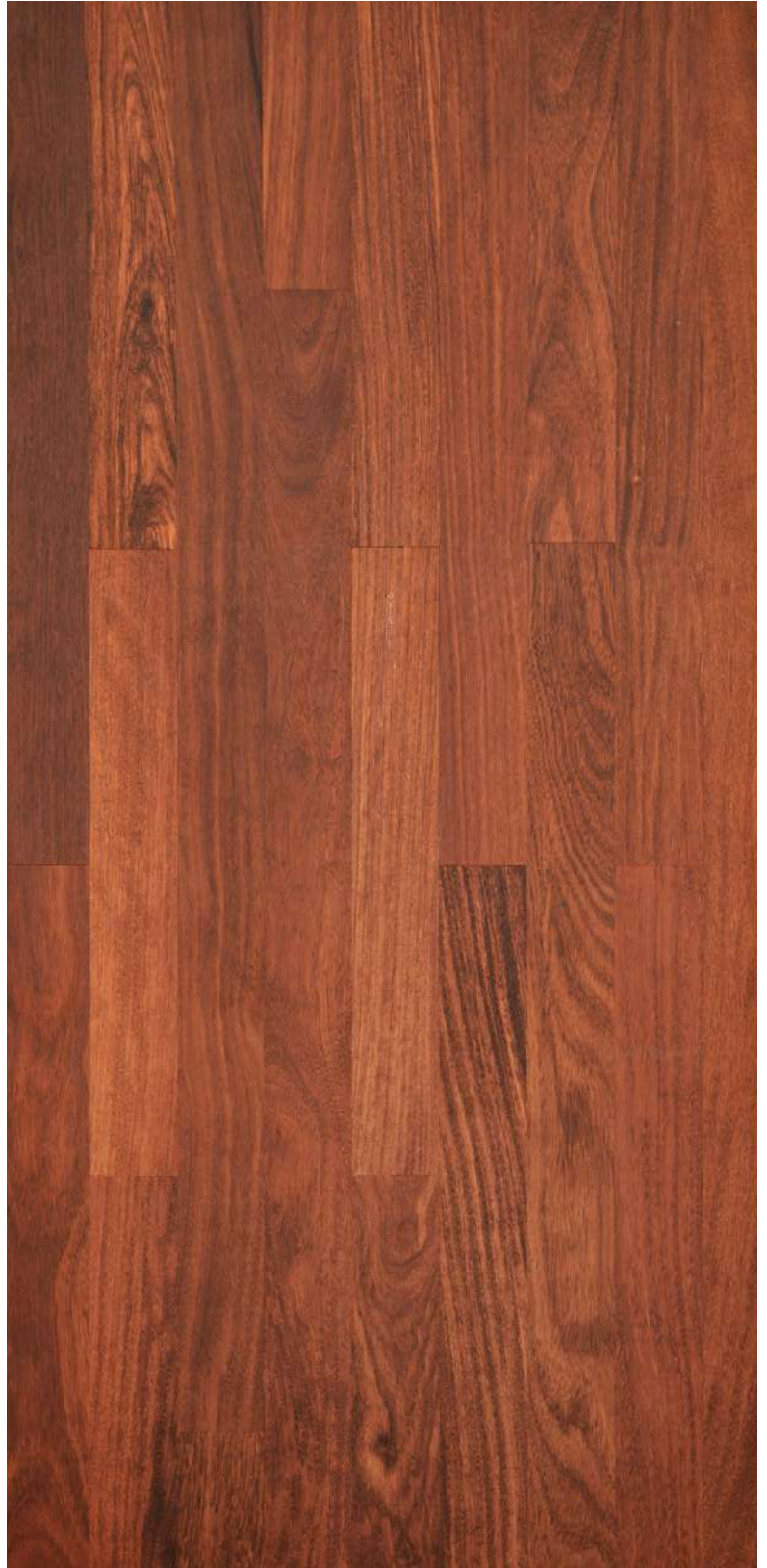
*SUCUPIRA, BRAZILIAN CHESTNUT, ALCORNOQUE, SUCUPIRA PARDA, SAPUPIRA, SUCUPIRA PRETA, BLACK SUCUPIRA, PARICARANA, COEUR DEHORS)*

## LOCATION OF OCCURRENCE

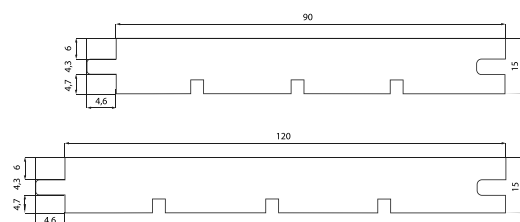
The hard Sucupira wood grows in tropical areas of Central and South America.

## GENERAL DESCRIPTION OF THE WOOD

The heartwood is dull chocolate to reddish-brown with light yellow spots that create a striped pattern on quarter-sawn surfaces. The grain is irregular and interlaced, sometimes wavy. The sapwood is whitish and clearly separated from the heartwood. The unique color and grain pattern of Sucupira make it an attractive choice for many projects.



The heartwood is dull chocolate to reddish-brown with light yellow spots that create a striped pattern on quarter-sawn surfaces.



## AVAILABLE DIMENSIONS

- **Thickness:** 15 mm
- **Width:** 90 mm / 120 mm
- **Length:** 400 - 1500 mm (increasing by 10 cm), average length 900 mm
- Sucupira flooring is supplied with a minimum of 20% lengths between 400 - 600 mm evenly represented and 80% lengths between 650 - 1500 mm.

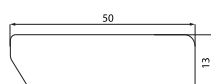
## QUALITY AND PROCESSING

- Surface brushed, unfinished
- 4x tongue&groove, without bevels on the longitudinal and transverse sides

## SKIRTINGS

### SOLID SPRUCE SKIRTING

- Lacquered white RAL 9010
- 13 x 50 mm x 2400 m



## RECOMMENDED ADHESIVE FOR FULL SURFACE BONDING:

- Two-component polyurethane adhesive Bakit PU-P



## RECOMMENDED SURFACE FINISH:

- Osmo Clear Hardwax Oil Express with hardener



---

# MASSARANDUBA

## MANILKARA BIDENTATA

### TRADE NAMES:

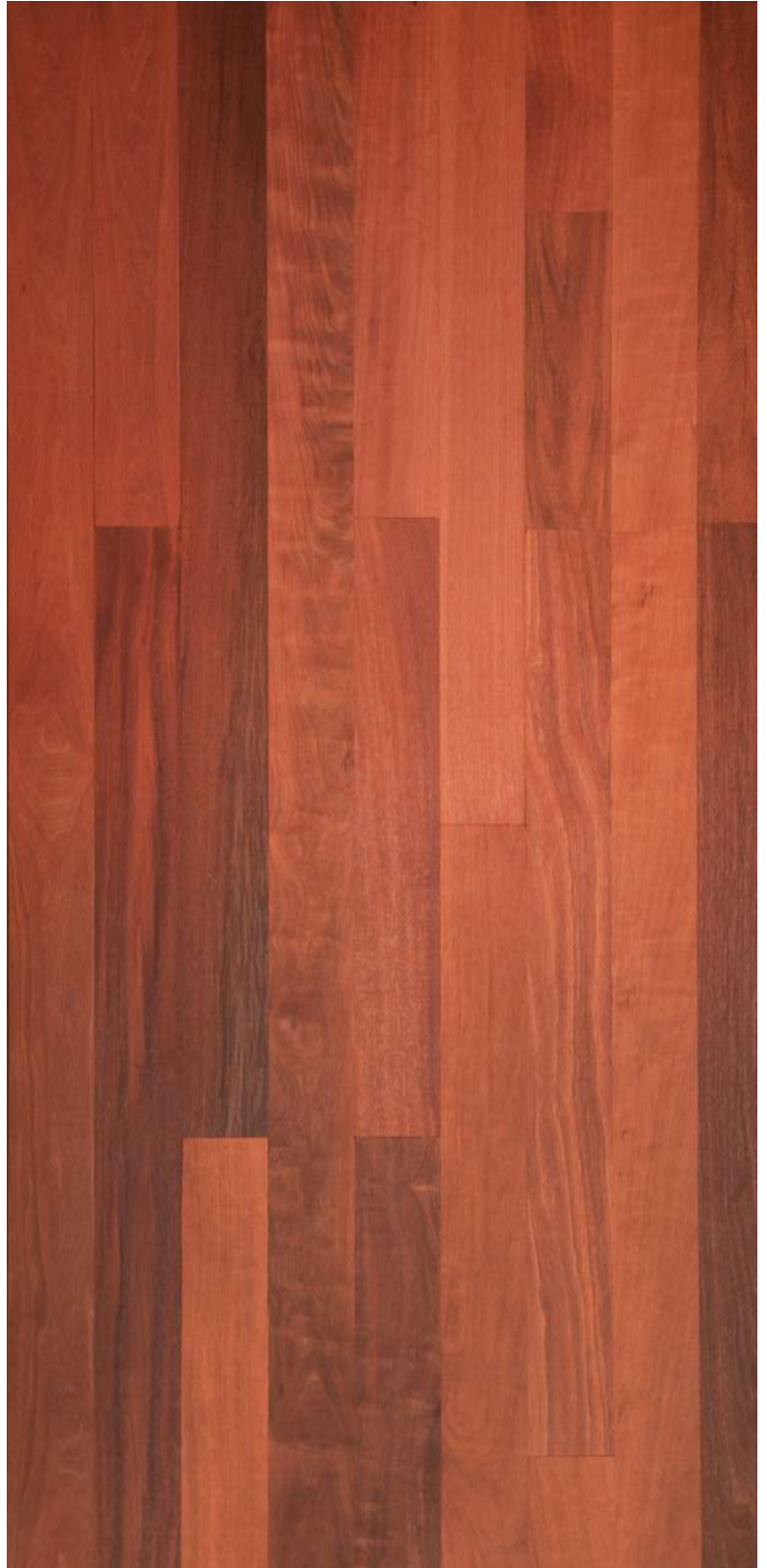
APARAIÚ, MARAPAJUBA-DA-VÁRZEA, MAÇARANDUBA, MAÇARANDUBA DE LEITE E MAÇARANDUBINHA, MARAPAJUBA, MAÇARANDUBA E PARAJU, APARAIÚ, BALATA-VERDADEIRA, PARAJU, BALATA, BULLET WOOD, BALATA ROUGE, BULLET TREE, BOLLETRIE, PAARDEVLEESHOUT, MASSA RANDU, MANILKARA, BORONI, SAPATIA OUDOU, MATIOPAOU, BOITI, BOIS BOULET, BOROWE, ABEILLE, BALATA GOMME, BALATA FRANC, QUINILLA, PAMASHTO, NISPERO, QUINILA COLORADA

### LOCATION OF OCCURRENCE

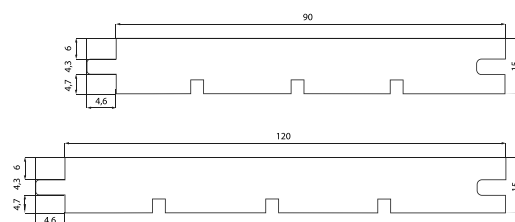
Primarily found in the mainland forests of the Amazon. It is located throughout Central America, northern South America (as far as Peru), and southern areas of North America (Florida, Costa Rica, Panama, Venezuela, eastern Peru, and Brazil). In Brazil, it is found in the states of Pará, Amapá, Amazonas, Rondônia, and Roraima.

### GENERAL DESCRIPTION OF THE WOOD

The sapwood ranges from pink to yellowish-beige, gradually transitioning into a distinctly colored red heartwood. Fresh heartwood is massively red and darkens to a deep reddish-brown. Sometimes, due to alternating grain patterns, the wood may show striped patterns in radial sections, or due to irregular growth, a variegated texture. Generally, it has a fine, uniform structure with a low natural sheen.



The sapwood ranges from pink to yellowish-beige, gradually transitioning into a distinctly colored red heartwood. Sometimes striped, other times with a variegated texture.



### → **AVAILABLE DIMENSIONS**

- **Thickness:** 15 mm
- **Width:** 90 mm / 120 mm
- **Length:** 400 - 1500 mm (increasing by 10 cm), average length 900 mm
- Massaranduba flooring is supplied with a minimum of 20% lengths between 400 - 600 mm evenly distributed and 80% lengths between 650 - 1500 mm.

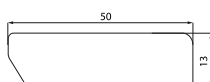
### **QUALITY AND PROCESSING**

- Surface brushed, unfinished
- 4x tongue&groove, without bevels on the longitudinal and transverse sides

### **SKIRTINGS**

#### **SOLID SPRUCE SKIRTING**

- Lacquered white RAL 9010
- 13 x 50 x 2400 mm



### **RECOMMENDED ADHESIVE FOR FULL SURFACE BONDING:**

- Two-component polyurethane adhesive Bakit PU-P



### **RECOMMENDED SURFACE FINISH:**

- Osmo Clear Hardwax Oil Express with hardener



---

# OAK

QUERCUS S.P.P.

## TRADE NAMES:

OAK

## LOCATION OF OCCURRENCE

The genus includes 400–600 species, primarily found in the temperate to subtropical zones of the Northern Hemisphere. The most widespread species are in North America and Eastern Asia, with fewer species in Europe. Some species also occur in tropical areas of Asia and South America.

## GENERAL DESCRIPTION OF THE WOOD

The sapwood is lighter than the heartwood, which is also lighter, yellowish-brown, typically with straight grain but often irregular or cross-grain. The radial cut displays a characteristic silvering pattern due to wide rays and has a slightly coarse texture. Oak contains a significant amount of tannins (12–20%), including catechins and ellagitannins, as well as flavonoids and purple gallotannin, which gives the oak bark its reddish color.

## DIMENSIONS

- **Thickness:** 20 mm
- **Width:** 160/200 mm
- **Length:** 500–2000 mm

## QUALITY AND PROCESSING

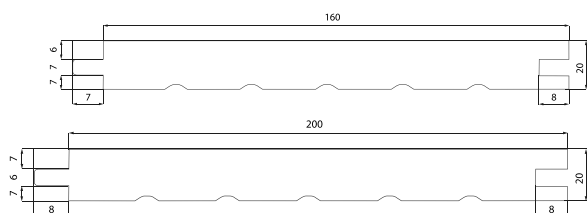
- Brushed surface, smooth, without finish
- 4 x tongue and groove, 4 x bevel on longitudinal and transverse sides, 1 mm
- Sapwood permitted up to approximately 30% of the width of planks; healthy knots and knots repaired with filler permitted
- Color variations of the wood allowed, with a natural appearance and texture
- Knots filled; Rustic quality



The wood features narrow, light brown sapwood and a broad, evenly colored brown heartwood. In the center and tangential cut, you can observe the prominent "mirrors" typical of oak.



WIDTH 160



WIDTH 200



#### RECOMMENDED COLOUR FINISH:

- OSMO Decorative wax transparent shades
- OSMO Oil Stain
- OSMO Colored Hardwax Oil

#### AFTER DRYING:

- After drying, apply 1 x OSMO Clear Hardwax Oil



#### RECOMMENDED ADHESIVE FOR FULL SURFACE BONDING:

- Two-component polyurethane adhesive Bakit PU-P



#### RECOMMENDED SURFACE FINISH:

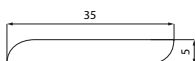
- Osmo Clear Hardwax Oil Original:
  - 3032 Satin Semi-Matt for a wet look effect
  - 3062 Matt for a matte surface appearance



### SKIRTINGS

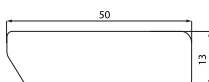
#### SOLID

- 5 x 35 mm, l. 2,5 m, without ST



#### NATUR VENEER OAK

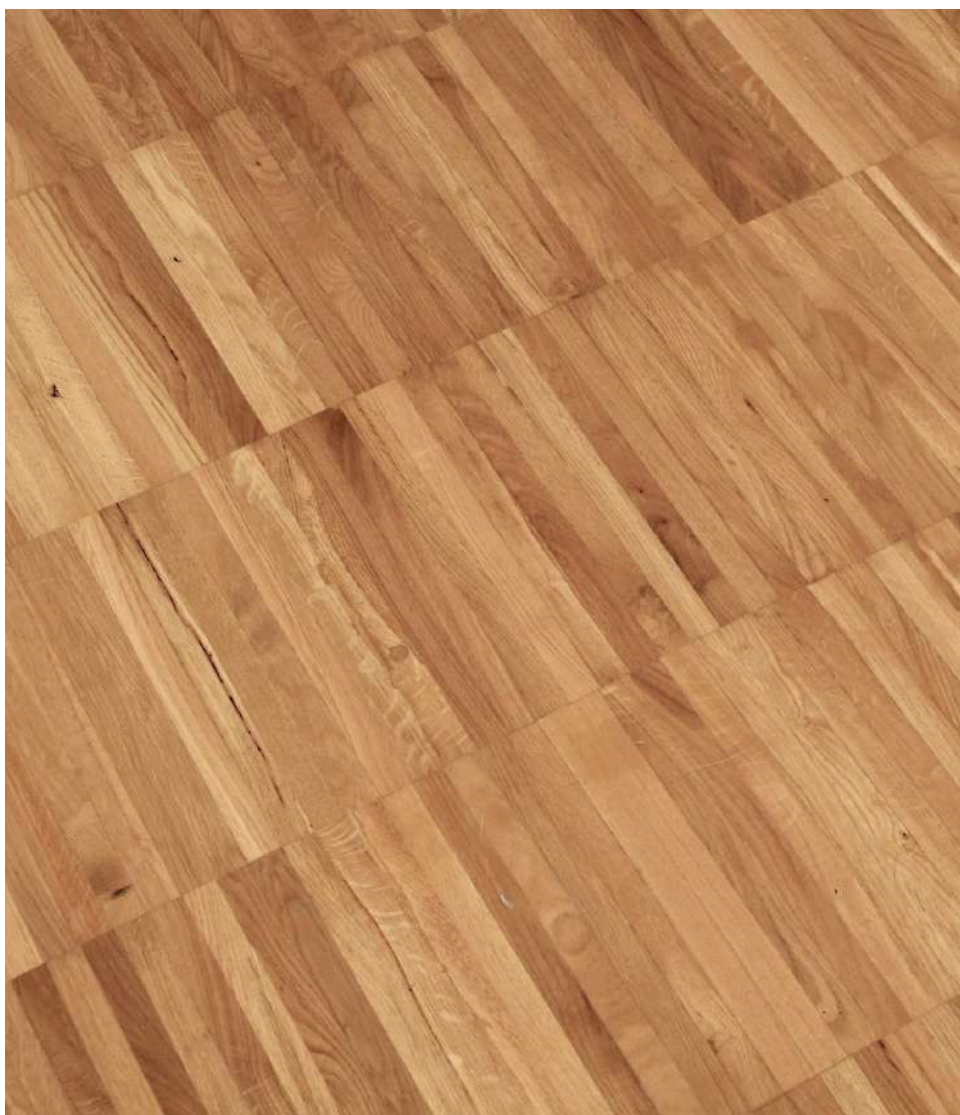
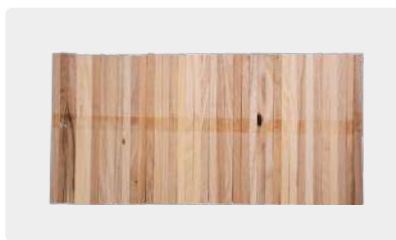
- 13 x 50 mm l. 2.4 m, without ST



---

# OAK

## SOLID INDUSTRIAL PARQUET



### **AVAILABLE DIMENSIONS**

- Thickness: 22,8 mm
- Width: 8 mm
- Length: 160 mm

### **QUALITY AND PROCESSING**

- Solid oak
- Brushed surface, without finish
- Quality MIX

### **RECOMMENDED ADHESIVE FOR FULL SURFACE BONDING:**

- Two-component polyurethane adhesive Bakit PU-P





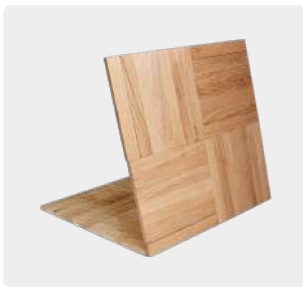
---

# OAK

## SOLID MOSAIC PARQUET



NATURAL



MIX



### **DIMENSIONS**

- Thickness: 8 mm
- Width: 320 mm
- Length: 640 mm

### **QUALITY AND PROCESSING**

- Solid oak
- Brushed surface, without finish
- Quality NATURAL and MIX

### **RECOMMENDED ADHESIVE FOR FULL SURFACE BONDING:**

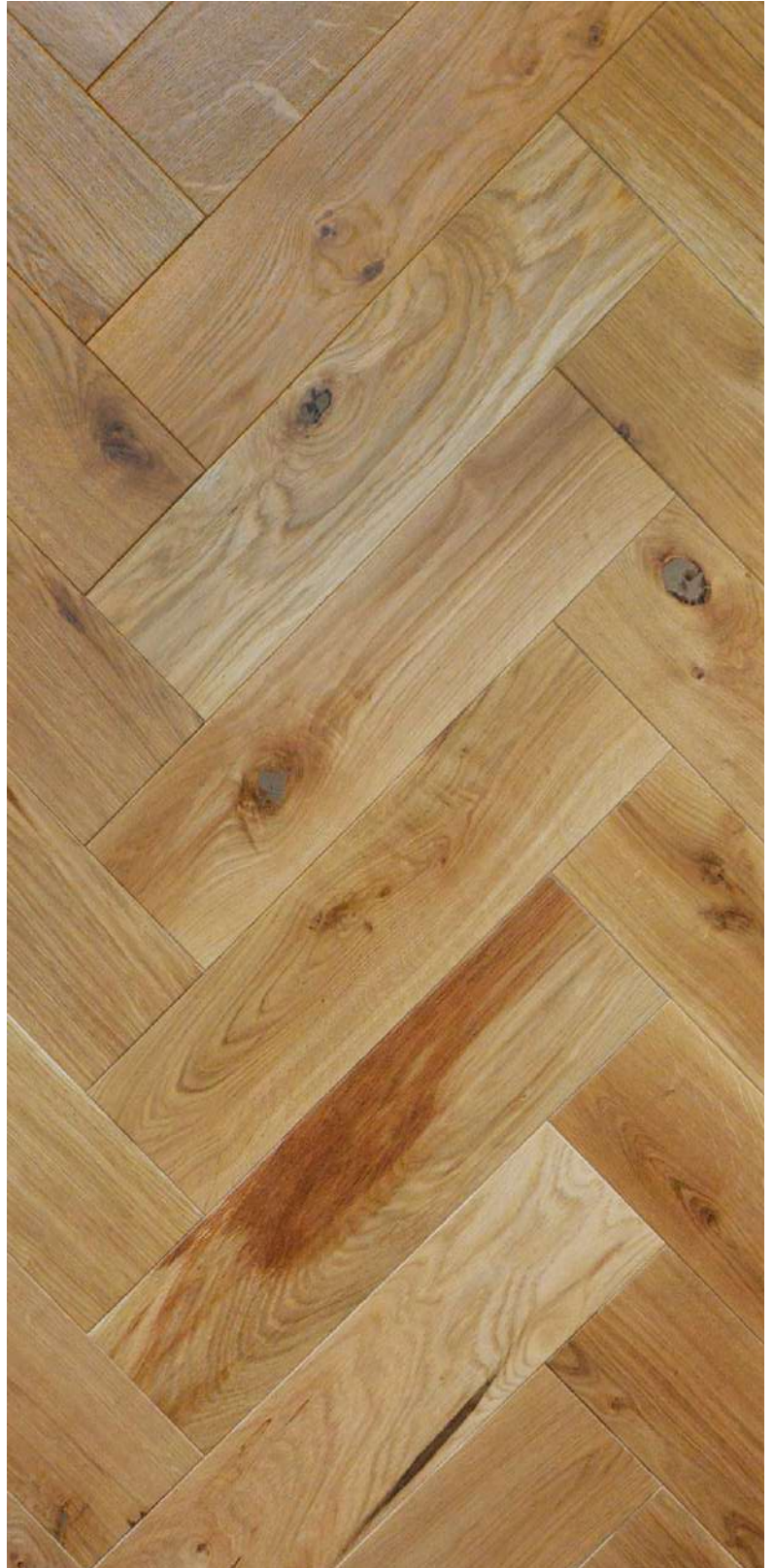
- Two-component polyurethane adhesive Bakit PU-P Two-component polyurethane adhesive Bakit PU-P



---

# OAK

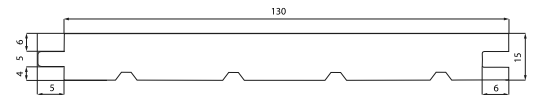
## HERRINGBONE



### **GENERAL DESCRIPTION OF THE WOOD**

Solid oak herringbone parquet has its loyal customer base who wouldn't consider any other flooring option. Historically, oak parquet has also been used in commercial spaces such as stores, dance halls, gyms, and event spaces, where the wooden floor must withstand high levels of stress.

Oak parquet has historically been used in commercial spaces like stores, dance halls, gyms, and event areas, where the wooden floor needs to endure high levels of wear and tear.



### AVAILABLE DIMENSIONS

- Thickness: 15 mm
- Width: 130 mm
- Length: 500 mm LP

### QUALITY AND PROCESSING

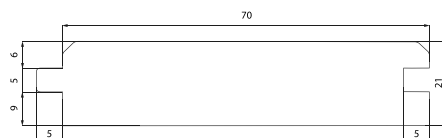
- Solid oak
- Brushed surface, without finish
- 4 x tongue and groove, 2 x bevel on longitudinal sides

### RECOMMENDED ADHESIVE FOR FULL SURFACE BONDING:

- Two-component polyurethane adhesive Bakit PU-P



# OAK PARQUET



## AVAILABLE DIMENSIONS

- **Thickness:** 21 mm
- **Width:** 70 mm
- **Length:** 500 mm

## QUALITY AND PROCESSING

- Brushed surface, smooth, without finish
- 4 x tongue & groove
- Knots filled, Rustic quality

## RECOMMENDED COLOUR FINISH:

- OSMO Decorative wax, transparent shades
- OSMO Oil-Based Stain
- OSMO Colored Hard Wax Oil

## AFTER DRYING:

- After drying, apply 1 coat of OSMO Clear Hard Wax Oil



## RECOMMENDED TYPE OF ADHESIVE FOR FULL SURFACE BONDING:

- Two-component polyurethane adhesive Bakit PU-P



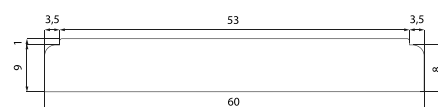
## RECOMMENDED SURFACE FINISH:

- OSMO Clear Hard Wax Oil Original:
  - 3032 Silk Matt for a wetlook effect
  - 3062 Matt for a matte surface appearance



# OAK

## LAMPARQUET



### DIMENSIONS

- **Thickness:** 10 mm
- **Width:** 60 mm
- **Length:** 300 mm

### QUALITY AND PROCESSING

- Brushed surface, smooth, without finish
- 4x tongue and groove, 4x bevel on the longitudinal and transverse edges
- Knots filled, Mix quality

### RECOMMENDED COLOUR FINISH:

- OSMO Decorative wax, transparent shades
- OSMO Oil-Based Stain
- OSMO Colored Hard Wax Oil

### AFTER DRYING:

- After drying, apply 1 coat of OSMO Clear Hard Wax Oil



### RECOMMENDED TYPE OF ADHESIVE FOR FULL SURFACE BONDING:

- Two-component polyurethane adhesive Bakit PU-P



### RECOMMENDED FINISH:

- OSMO Clear Hard Wax Oil Original:
  - 3032 Silk Matt for a wet-look effect
  - 3062 Matt for a matte surface appearance







---

# INSPIRATION

## FOR YOUR PROJECTS

### **SOLID OAK**

Oak has been used since ancient times for making the most luxurious furniture, staircases, and flooring. Its beautiful grain and wear resistance make oak a valuable material for both modern and stylish interiors.



---

# INSPIRATION

## FOR YOUR PROJECTS

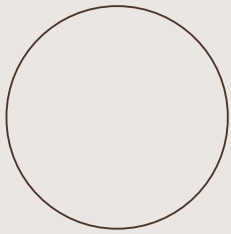
### **TEAK**

Teak is considered one of the unique hardwoods due to its beautiful and high-quality wood. It is hard and contains a high proportion of natural oils, making products made from it highly resistant to moisture and pests while maintaining an elegant appearance.

The ancient Romans valued teak for its quality and imported it from India. They used it to make luxury items and for building their ships. Teak flooring is both elegant and incredibly durable.







Real **FLOOR**®



**AU-MEX Ltd.**

Podebradska 574/40

190 00 Praha 9 – Vysocany



+420 283 933 452

GSM: +420 608 052 451



export@au-mex.cz

export@au-mex.com



www.au-mex.com

<https://shop.au-mex.com/>



@aumex\_ltd



@AuMex



@Au-mexcom



@Au-Mex

